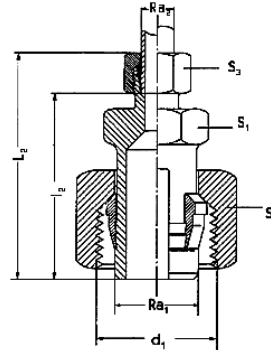


Reduzierstutzen (lange Ausführung)

DIN/ISO 228
Whitworth-Rohrgewinde
(zylindr.)



| PN | G1 | G2 | i | S1 | d3 | l | t | Gewicht % | Artikel |
|-----|-----------|---------|----|----|----|----|------|-----------|-----------------|
| 630 | G 1/8 A | G 1/4 | 8 | 19 | 14 | 31 | 17,0 | 3,9 | RIG 1/8x1/4 |
| | G 1/8 A | G 3/8 | 8 | 24 | 14 | 32 | 17,0 | 6,4 | RIG 1/8x3/8 |
| | G 1/4 A | G 1/8 | 12 | 19 | 18 | 28 | 12,0 | 3,8 | RIG 1/4x1/8 |
| | G 1/4 A | G 3/8 | 12 | 24 | 18 | 36 | 17,0 | 6,8 | RIG 1/4x3/8 |
| | G 1/4 A | G 1/2 | 12 | 30 | 18 | 40 | 20,0 | 8,7 | RIG 1/4x1/2 |
| 400 | G 1/4 A | G 3/4 | 12 | 36 | 18 | 43 | 22,0 | 17,5 | RIG 1/4x3/4 |
| 630 | G 3/8 A | G 1/4 | 12 | 22 | 22 | 36 | 17,0 | 7,0 | RIG 3/8x1/4 |
| | G 3/8 A | G 1/2 | 12 | 30 | 22 | 41 | 20,0 | 9,4 | RIG 3/8x1/2 |
| 400 | G 3/8 A | G 3/4 | 12 | 36 | 22 | 44 | 22,0 | 18,3 | RIG 3/8x3/4 |
| | G 1/2 A | G 3/8 | 14 | 27 | 26 | 36 | 17,0 | 9,2 | RIG 1/2x3/8 |
| | G 1/2 A | G 3/4 | 14 | 36 | 26 | 46 | 22,0 | 18,6 | RIG 1/2x3/4 |
| | G 1/2 A | G 1 | 14 | 41 | 26 | 49 | 24,5 | 22,0 | RIG 1/2x 1 |
| 250 | G 1/2 A | G 1 1/4 | 14 | 55 | 26 | 53 | 26,5 | 48,7 | RIG 1/2x1 1/4 |
| 400 | G 3/4 A | G 1/2 | 16 | 32 | 32 | 41 | 20,0 | 14,4 | RIG 3/4x1/2 |
| | G 3/4 A | G 1 | 16 | 41 | 32 | 51 | 24,5 | 24,0 | RIG 3/4x 1 |
| 250 | G 3/4 A | G 1 1/4 | 16 | 55 | 32 | 55 | 26,5 | 48,1 | RIG 3/4x1 1/4 |
| | G 3/4 A | G 1 1/2 | 16 | 60 | 32 | 57 | 28,5 | 56,0 | RIG 3/4x1 1/2 |
| 400 | G 1 A | G 3/4 | 18 | 41 | 39 | 47 | 22,0 | 28,0 | RIG 1 x3/4 |
| 250 | G 1 A | G 1 1/4 | 18 | 55 | 39 | 57 | 26,5 | 51,3 | RIG 1 x1 1/4 |
| | G 1 A | G 1 1/2 | 18 | 60 | 39 | 59 | 28,5 | 58,6 | RIG 1 x1 1/2 |
| | G 1 1/4 A | G 1 | 20 | 50 | 49 | 52 | 24,5 | 45,8 | RIG 1 1/4x 1 |
| | G 1 1/4 A | G 1 1/2 | 20 | 60 | 49 | 60 | 28,5 | 60,2 | RIG 1 1/4x1 1/2 |
| | G 1 1/2 A | G 1 1/4 | 22 | 55 | 55 | 58 | 26,5 | 54,4 | RIG 1 1/2x1 1/4 |

