

3-pc. Ball Valve, PN 64/40* Mod. 641TS

B/W ends, full bore

* DN 8 – 50 PN 64/ DN 65 – 100 PN 40

Body, body cap: mat. 1.4408

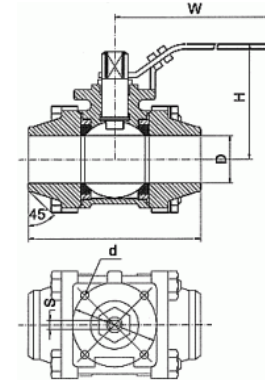
Ball, Stem: mat. 1.4401

Gland Nut, washer, bolt, nut: mat. 1.4301

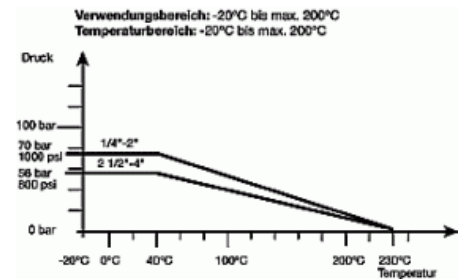
A-641TS Ball Seat, Thrust packing: RTFE

Other packing, gland : PTFE

Handle: mat. 1.4301 with plastic cover



DN	Rp	L	H	W	D	Torque (Nm)	weight/kg/pcs.
8	1/4"	59	51	95	12,8	6,9	0,37
10	3/8"	59	51	95	12,8	6,9	0,38
15	1/2"	64	55	95	15,0	6,9	0,62
20	3/4"	75	59	110	20,0	10,4	0,83
25	1"	85	73	135	25,0	17,3	1,25
32	1 1/4"	97	78	135	32,0	23,0	1,90
40	1 1/2"	110	91	165	38,0	28,8	2,66
50	2"	132	99	165	50,0	36,8	4,26
65	2 1/2"	167	130	215	65,0	57,5	8,63
80	3"	187	142	215	80,0	69,0	12,49
100	4"	230	174	310	100,0	92,0	22,33



Dimensions subject to change without notice, all dimensions in mm.

